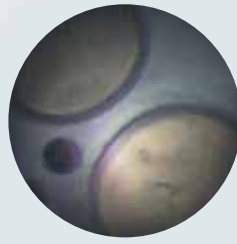


HEINE QUALITY
MADE IN GERMANY

∴ HEINE SFM 8-1000®/2000®
Flex & Stay Endoscopes



Endoscope Comparison



Conventional Endoscope
with 3500 Single fibres



HEINE SFM 8 Endoscope
with 7400 Single fibres

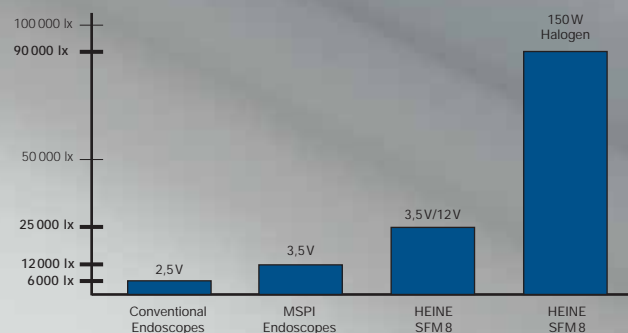
Unique Features of the SFM 8-1000/2000 Flex & Stay Endoscopes:

- ∴ **Brilliant, bright light.** 3.5 V and 12 V versions are 4 times as bright as conventional Endoscopes. 15 times as bright when used in combination with the HK 7000 F.O. Projector.
- ∴ **A high-resolution Image Guide** with 7400 single fibres produces a super-high-resolution image.
- ∴ **A large 50° Opening Angle** ensures a large Field of View.
- ∴ **Multi-coated**, high-resolution achromatic optics provide a sharply-focused image that covers the entire field of view "edge-to-edge".
- ∴ **Quality**, compact Rod lenses for high light transmission.
- ∴ **Continuously focusable** eyepiece ensures absolutely sharp, crisp images.

Compatibility:

HEINE battery packs and accessories (e.g. camera adaptors) fit all of the new generation HEINE SF- Endoscopes. Conventional Fiber Optic projectors and light guides from other manufacturers can also be connected to the HEINE F.O. Endoscopes using standard adaptors.

Flexible Endoscope Brightness at a distance of 16 mm



Accessories for the SFM8 Endoscope



Camera Adaptor



90°



110°

Angled Side
View Adaptor



Light Guide



HK 7000
F.O. Projector



Specification of the SFM8 - 1000/2000 Flex & Stay Endoscope:

- ⋮ **Outer tube:** Malleable.
- ⋮ **Working length:** 1 m or 2 m.
- ⋮ **Diameter:** 8 mm.
- ⋮ **Radius of curvature:** 60mm.
- ⋮ **Direction of view:** 0°.
- ⋮ **Brightness:** Up to 90 000 lx at a distance of 16mm.
- ⋮ **Working distance:** 10 mm to infinity.
- ⋮ **Attachable Angled Side-View Adaptors, optional Accessory:** 90° and 110°.

Light and power supply options:

- ⋮ **3.5 V version*:** Battery handle with three LR 14 Alkaline batteries - 10 hr operating time with new set of batteries.
- ⋮ **12 V version*:** Connecting Cord for cigarette lighter socket (5 m).
- ⋮ **12 V version*:** Rechargeable Battery Pack (Accubox I) with light intensity control.
- ⋮ **220 V version:** F.O. projector HK 7000 with light guide: Optimal white light.

* For 3.5V and 12V versions AV Adaptor is required.
See ordering information.

: HEINE SFM 8-1000[®]/2000[®] - Flex & Stay 8 mm Endoscopes

Flexible Fiber Optic Endoscopes with malleable probe.

Immersible in approved fluids (water and oil). No lens fogging. No heat generation at the tip of the instrument.
Portable application with either Accubox or Battery Handle.





Accubox I with
Connecting Cord



Connecting Cord for
Cigarette Lighter Socket



Battery handle

[ORDERING INFORMATION]

SFM 8 Endoscope

SFM 8-1000 Endoscope in Protective carrying case	T-00.26.731
SFM 8-2000 Endoscope in Protective carrying case	T-00.26.733

Accessories

Adaptor for connection to Wolf Light Guides	T-00.26.407
Adaptor for connection to Storz, Olympus, Winter & Ibe Light Guides	T-00.26.408
AV Adaptor incl. 12 V XHL Xenon Halogen bulb	T-05.26.402
AV Adaptor incl. 3.5 V XHL Xenon Halogen bulb	T-02.26.402
110° Angled Side View Adaptor for SF/SFM Endoscopes	T-00.26.723
90° Angled Side View Adaptor for SF/SFM Endoscopes	T-00.26.724
XHL Xenon Halogen Spare bulb 12 V	T-05.88.103
XHL Xenon Halogen Spare bulb 3.5 V	T-02.88.078

Rubber Cap for Spectacle Wearers	T-00.26.175
Camera Adaptor 49 mm	T-00.26.176
Camera Adaptor 52 mm	T-00.26.177
Camera Adaptor 55 mm	T-00.26.178
Adaptor Nikon Coolpix/Endoscope	T-00.26.186

Connecting Cord for Accubox 1.8 m with Connector (Cinch, Automatic)	T-00.99.241
Connecting Cord for Cigarette Lighter Socket, 5 m	T-00.99.246
Connecting Cord for 3.5 V battery handle	T-00.99.230
12 V Battery Pack Accubox I complete with transformer	T-05.99.629
Battery handle 3.5 V	T-02.25.369

HK 7000 F.O. Projector incl. XHL Halogen Spare bulb	T-96.15.121
Light Guide 2.5 m	T-03.26.403
XHL Halogen Spare bulb 150W for HK 7000 F.O. Projector	T-96.15.102
Fuse for HK 7000 F.O. Projector	T-96.15.110

Storage and transport case for SF/SFM Endoscope	T-539.00.000
---	--------------

SFM 8 Endoscope Sets

SFM 8-1000 Endoscope - Set, 3.5 V, contents: SFM 8-1000, AV Connector, Battery handle 3.5 V, XHL Xenon Halogen Spare bulb 3.5 V, Rubber-Cap, Protective carrying case	T-539.20.123
same, but with SFM 8-2000	T-540.20.123
SFM 8-1000 Endoscope - Set, 12 V, contents: SFM 8-1000, AV Connector, Connecting Cord with Cinch/Automatic Connector, Accubox I, XHL Xenon Halogen Spare bulb 12 V, Protective carrying case	T-539.50.629
same, but with SFM 8-2000	T-540.50.629

HEINE QUALITY
MADE IN GERMANY

A company makes history and gives a name to outstanding product quality: HEINE. Founded in 1946, family owned, rich in tradition and today international market leader in a complete range of diagnostic instruments for medical and technical applications. HEINE products meet all international standards (ISO/CE) and represent the leading edge in precision and ergonomic design. Ongoing dedication to research and development has created a solid and diverse technology base for continued quality and product leadership. Over 500 employees worldwide contribute to this success.

We reserve the right to change specification without notice.

Your distributor

03/05. tec 0705 e

HEINE OPTOTECHNIK

Kientalstraße 7 · 82211 Herrsching · Germany · Tel. +49 (0) 81 52/38-0
Fax +49 (0) 81 52/38-202 · e-mail: info@heineopto.de · www.heinetech.com

